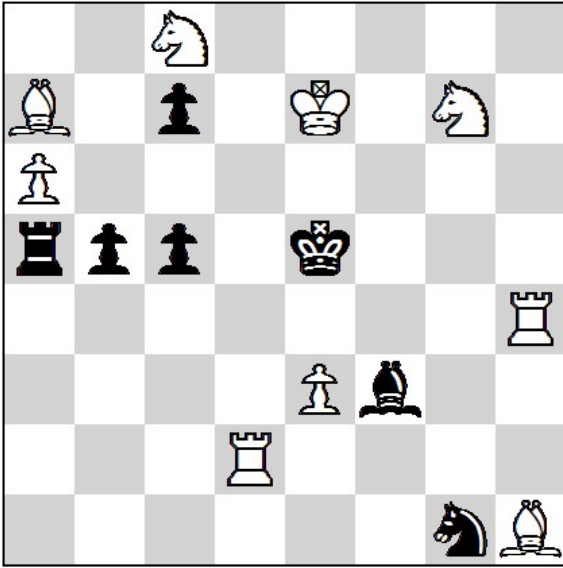


21st International Solving Contest 2025 Cat 2

19.01.2025 - Round 1. (120')

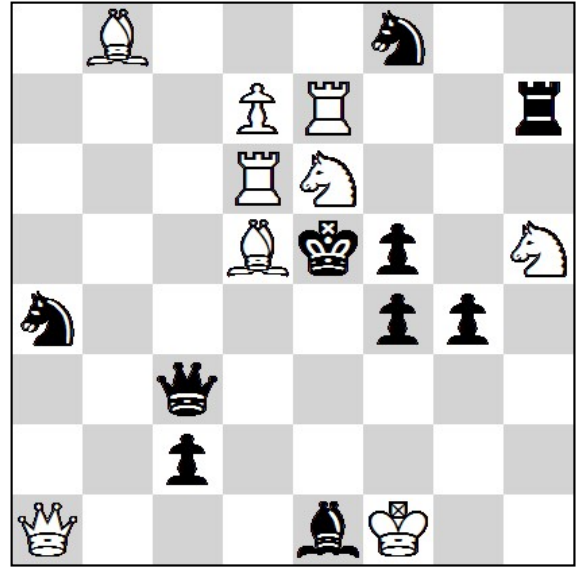
1.



#2

9 + 7

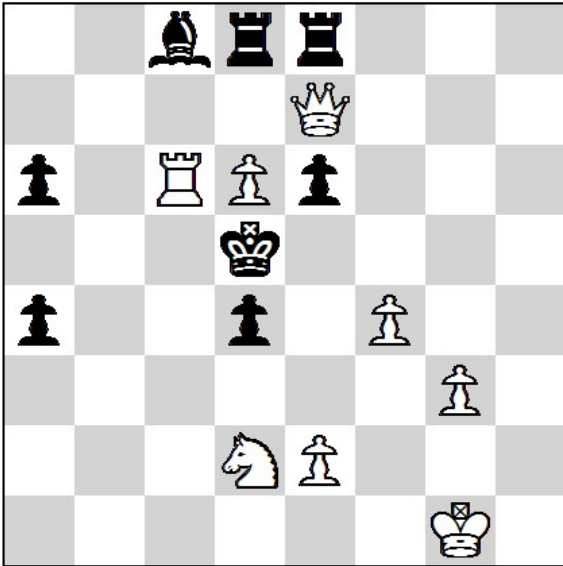
2.



#2

9 + 10

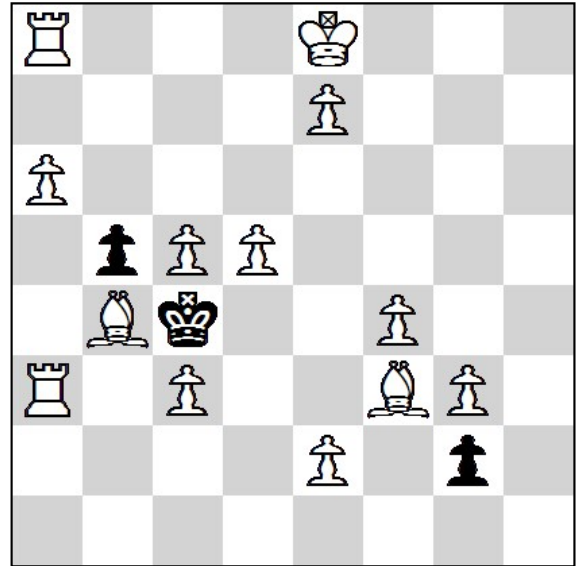
3.



#3

8 + 8

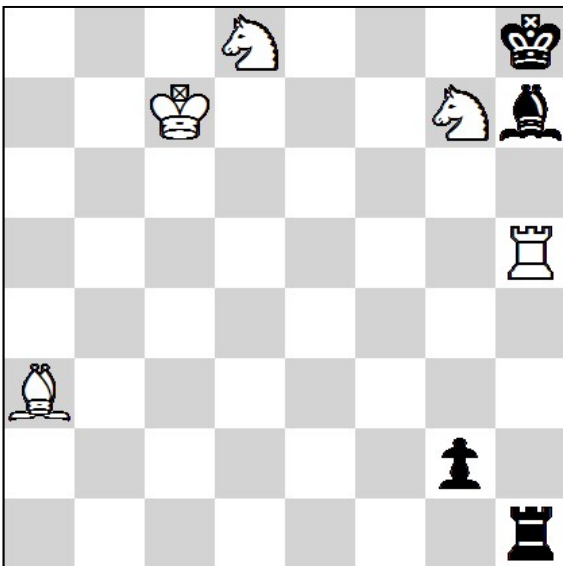
4.



#4

13 + 3

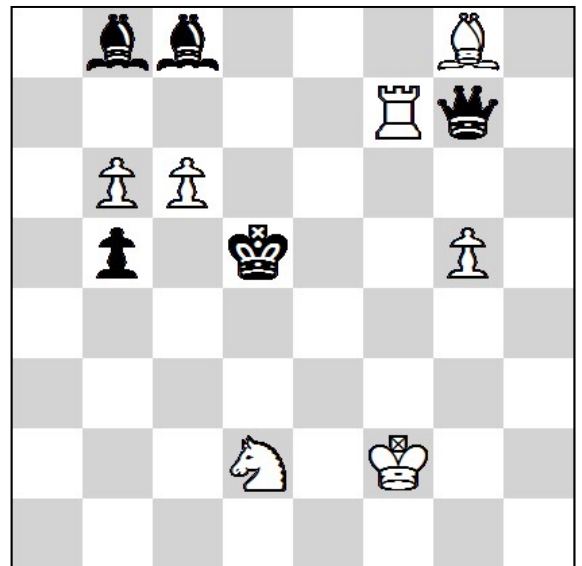
5.



+

5 + 4

6.



H#2

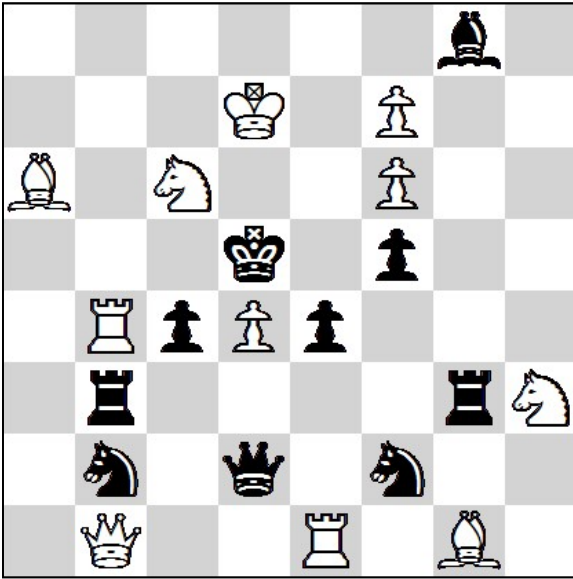
4 Solutions
(1,25 / 2,5 / 3,75 / 5)

7 + 5

21st International Solving Contest 2025 Cat 2

19.01.2025 - Round 2. (120')

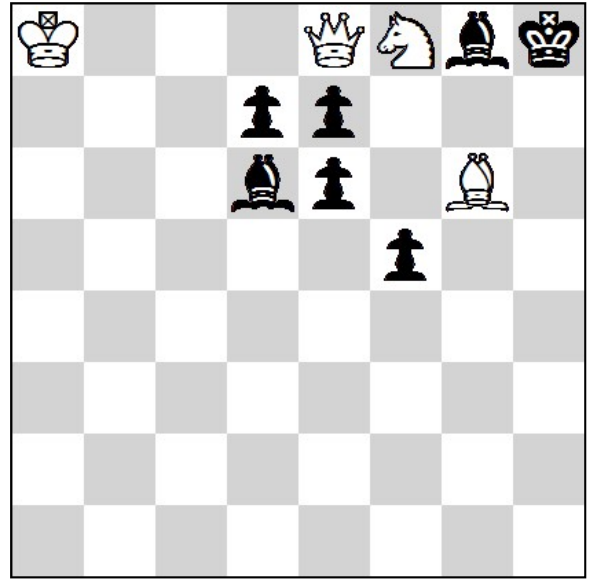
7.



#2

11 + 10

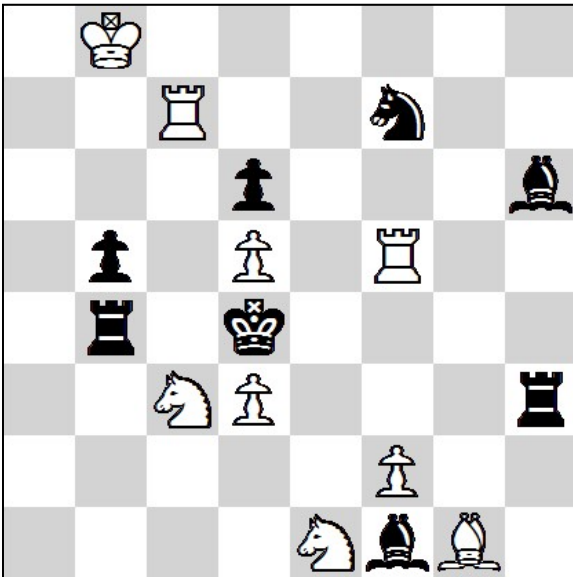
8.



#3

4 + 7

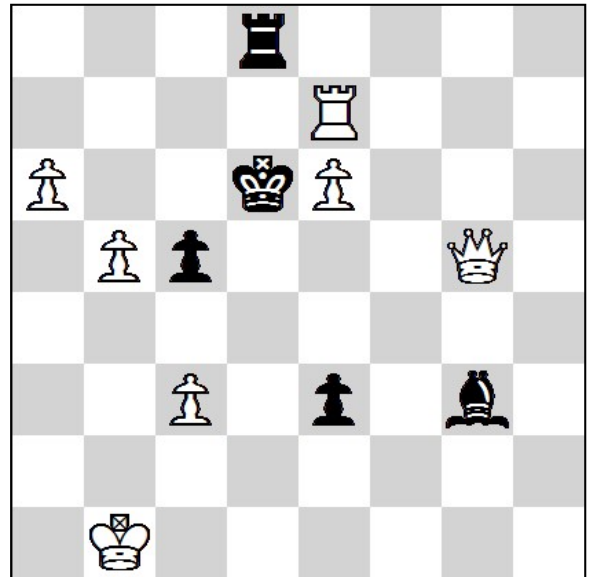
9.



#3

9 + 8

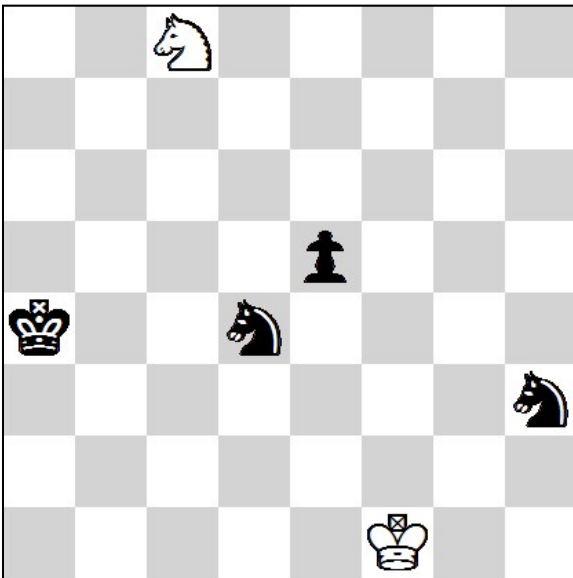
10.



#5

7 + 5

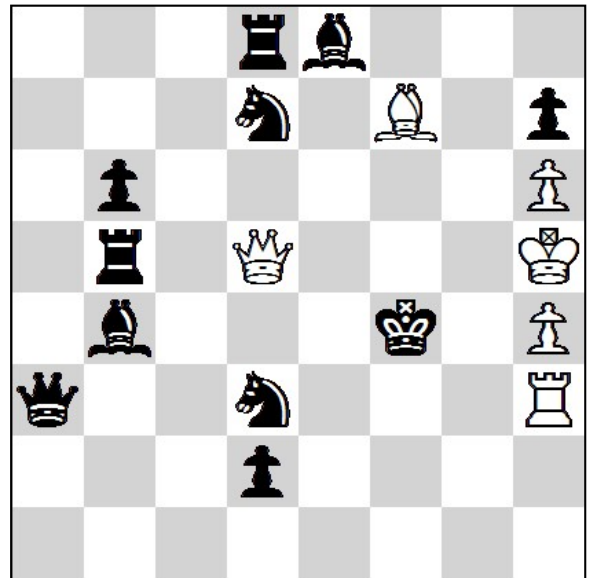
11.



=

2 + 4

12.



S#2

6 + 11